

*Contrasamba / Tropiganda*

Contrasamba

Am

Musical notation for Contrasamba in 4/4 time, starting with an Am chord. The melody consists of quarter and eighth notes.

*le Diable Vert / Evit Gabriel*

le Diable Vert

G

Musical notation for le Diable Vert in G major, starting with a G chord. The melody features a repeat sign and a fermata over a note.

*Mikey's Jig / Reel de Mattawa*

Mikey's Jig

Dm

Musical notation for Mikey's Jig in D minor, starting with a Dm chord. The melody is in 6/8 time.

*Monaghan Jig, The / Scarce O'Tatties*

The Monaghan Jig

Em Em D

Musical notation for Monaghan Jig in E minor, starting with an Em chord and ending with a D chord. The melody is in 6/8 time.

*Old Grey Cat / Tam Lin*

Old Grey Cat

Em

Musical notation for Old Grey Cat in E minor, starting with an Em chord. The melody is in 6/8 time.

*Orphan, The / Greasy Coat*

The Orphan

Dm C

Musical notation for Orphan in D minor, starting with a Dm chord and ending with a C chord. The melody is in 6/8 time.

*Peter Gunn / Growling Old Man Grumbling Old Woman / Reel St. Antoine*

Peter Gunn

A7 Repeat phrase 16 times Am

Musical notation for Peter Gunn in A major, starting with an A7 chord, followed by a repeat instruction 'Repeat phrase 16 times', and ending with an Am chord. The melody is in 4/4 time.

*Quarry Cross / Marie's Wedding*

Quarry Cross

Em (Bm) Em (Am) Em

Musical notation for Quarry Cross in E minor, starting with an Em chord and featuring Bm and Am chords. The melody is in 6/8 time.

*Red Haired Boy / Kitchen Girl*

Red Haired Boy

A A D

Musical notation for Red Haired Boy in A major, starting with an A chord and ending with a D chord. The melody is in 4/4 time.

*Spotted Pony / Shenandoah Falls*

*Spotted Pony*



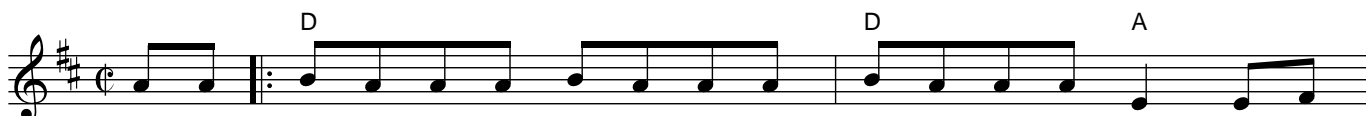
*Take a Dance / Bus Stop Reel*

*Take a Dance*



*Waiting for Nancy / Sandy Boys*

*Waiting For Nancy*



*Road to Lisdoonvarna / Indian Point*

*Road to Lisdoonvarna*



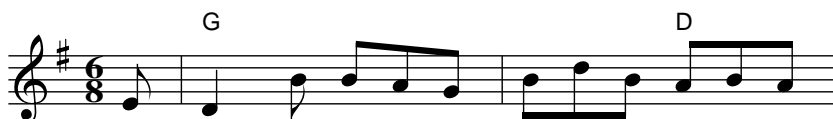
*Kesh Jig / Morrison's Jig*

*Kesh Jig (Kincora Jig)*



*Out on the Ocean / Down the Brae*

*Out on the Ocean*



*Whiskey Before Breakfast / Nail That Catfish to the Tree*

*Whiskey Before Breakfast*



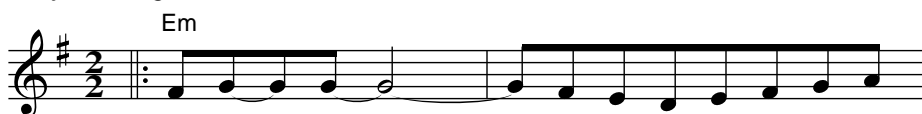
*Coleman's March / On the Danforth*

*Coleman's March*



*Grey Morning / Roger-s Dodge*

*Grey Morning*



*Evit Gabriel (Em) / Curvy Road to Corinth (G) / Evit Gabriel*

*Evit Gabriel*



*Le Tourment (C) / Maison de Glace (D)*

*Le Tourment*



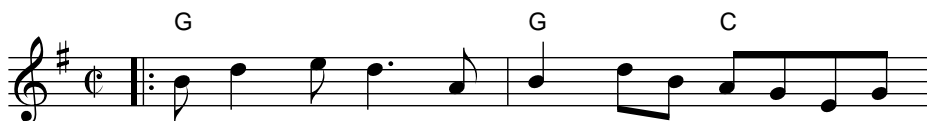
*Growling Old Man Grumbling Old Woman / Reel St. Antoine*

*Growling Old Man and Grumbling Old Woman*



*Jeff City (G) / Hunting the Buffalo (A)*

*Jeff City*



*Quarry Cross / Coleman's March / On the Danforth*

*Quarry Cross*



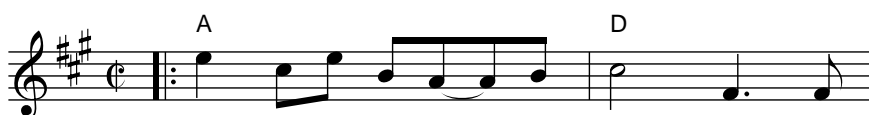
*Idlewild Jig / Irishman-s Heart to the Ladies*

*Idlewild Jig*



*Red Prairie Dawn / Shenandoah Falls*

*Red Prairie Dawn*



Wren / An Dro from Pinvidic

The Wren

The musical notation is written on a single staff in G major (one sharp) and 4/4 time. It begins with a treble clef, a key signature of one sharp (F#), and a common time signature (C). The melody starts with a repeat sign. The first measure contains a Bm chord and the notes G4, A4, B4, and C5. The second measure contains an Em chord and the notes G4, A4, B4, and C5. The third measure contains an Em chord and the notes G4, A4, B4, and C5. The fourth measure contains an Em chord and the notes G4, A4, B4, and C5. The piece ends with a double bar line.