

*An Dro from Pinvidic traditional*

Musical notation for "An Dro from Pinvidic traditional" in 4/4 time, key of D minor. The melody starts with a repeat sign. Chords are Dm, C, and Dm.

*Bus Stop Reel*

Musical notation for "Bus Stop Reel" in 4/4 time, key of D major. The melody starts with a repeat sign. Chords are Am and G.

*Cliffs of Moher*

Musical notation for "Cliffs of Moher" in 6/8 time, key of D major. The melody starts with a repeat sign. Chord is Am.

*Cluck Old Hen*

Musical notation for "Cluck Old Hen" in 4/4 time, key of D major. The melody starts with a repeat sign. Chords are A, G, A, and G.

*Cold Frosty Morning 1 (Minor-Major)*

Musical notation for "Cold Frosty Morning 1 (Minor-Major)" in 4/4 time, key of D major. The melody starts with a repeat sign. Chord is Am. A triplet of eighth notes is marked with a '3'.

*Coleman's March*

Musical notation for "Coleman's March" in 2/4 time, key of D major.

*Congress Reel*

Musical notation for "Congress Reel" in 4/4 time, key of D major. Chords are Am and Em.

*Contrasamba*

Musical notation for "Contrasamba" in 4/4 time, key of D major. Chord is Am.

*Curvy Road to Corinth*

Musical notation for "Curvy Road to Corinth" in 4/4 time, key of D major. Chords are Em and D.

*Diable Vert, le*

Musical notation for "Diable Vert, le" in 4/4 time, key of D major. Chord is G. A fermata is placed over the final note.

*Down The Brae*

Musical notation for "Down The Brae" in 4/4 time, key of D major. Chord is Em.



Jeff City

Musical notation for 'Jeff City' in G major, 2/4 time. The melody starts with a repeat sign. Chords G and C are indicated above the staff.

Judy and Jim's Wedding

Musical notation for 'Judy and Jim's Wedding' in D major, 3/4 time. Chords D and Em7 are indicated above the staff.

Julia Delaney

Musical notation for 'Julia Delaney' in D minor, 2/4 time. Chords Dm, C, and Dm are indicated above the staff.

Kesh Jig

Kincora Jig

Musical notation for 'Kesh Jig' and 'Kincora Jig' in G major, 6/8 time. Chords G and D7 are indicated above the staff.

Kitchen Girl

Musical notation for 'Kitchen Girl' in A major, 4/4 time. Chords A and G are indicated above the staff.

le Diable Vert

Musical notation for 'le Diable Vert' in G major, 2/4 time. A chord G is indicated above the staff.

Le Tourment

Musical notation for 'Le Tourment' in F major, 6/8 time. Chords F and C are indicated above the staff.

Maison de Glace

Musical notation for 'Maison de Glace' in D major, 6/8 time. Chords D and F#m are indicated above the staff.

Marie's Wedding

Musical notation for 'Marie's Wedding' in G major, 2/4 time. Chords G, C, and D are indicated above the staff.

Mikey's Jig

Musical notation for 'Mikey's Jig' in D minor, 6/8 time. A chord Dm is indicated above the staff.

*The Monaghan Jig*

Musical notation for *The Monaghan Jig*. The piece is in G major and 6/8 time. It features a repeat sign at the beginning. The melody consists of eighth and quarter notes. Chords are indicated as Em, Em, and D.

*Morrison's Jig*

Musical notation for *Morrison's Jig*. The piece is in G major and 6/8 time. The melody is composed of eighth and quarter notes. Chords are indicated as Em and D.

*Nail That Catfish to the Tree*

Musical notation for *Nail That Catfish to the Tree*. The piece is in G major and 4/4 time. It starts with a repeat sign. The melody is primarily composed of eighth notes. A chord of G is indicated.

*Old Grey Cat*

Musical notation for *Old Grey Cat*. The piece is in G major and 6/8 time. The melody consists of quarter and eighth notes. A chord of Em is indicated.

*On the Danforth*

Musical notation for *On the Danforth*. The piece is in G major and 6/8 time. The melody features a mix of quarter and eighth notes.

*The Orphan*

Musical notation for *The Orphan*. The piece is in G major and 6/8 time. The melody consists of quarter and eighth notes. Chords are indicated as Dm and C.

*Out on the Ocean*

Musical notation for *Out on the Ocean*. The piece is in G major and 6/8 time. The melody is composed of eighth and quarter notes. Chords are indicated as G and D.

*Paddy On The Landfill*

Musical notation for *Paddy On The Landfill*. The piece is in G minor and 4/4 time. The melody consists of quarter and eighth notes.

*Peter Gunn Theme*

Musical notation for *Peter Gunn Theme*. The piece is in G major and 6/8 time. It features a repeat sign. The melody consists of quarter notes. A chord of A7 is indicated, and the instruction "Repeat phrase 16 times" is written above the staff.

*Quakers Wife, The*

*Merrily Kissed The...aka. RH.024*

Musical notation for *Quakers Wife, The*. The piece is in G major and 6/8 time. The melody consists of quarter and eighth notes.

*Quarry Cross*

Musical notation for *Quarry Cross*. The piece is in G major and 6/8 time. It features a repeat sign. The melody consists of quarter and eighth notes. Chords are indicated as Em, (Bm) Em, and (Am) Em.

*Red Haired Boy*

Musical notation for "Red Haired Boy" in treble clef, key of A major (two sharps), and common time (C). The melody consists of six measures. Chords A and D are indicated above the staff.

*Reel de Mattawa*

Musical notation for "Reel de Mattawa" in treble clef, key of A major (two sharps), and 4/4 time. The melody consists of six measures. Chords Em and D are indicated above the staff.

*Reel de Montreal*

Musical notation for "Reel de Montreal" in treble clef, key of G major (one sharp), and 4/4 time. The melody consists of six measures. Chord G is indicated above the staff.

*Reel St. Antoine*

Musical notation for "Reel St. Antoine" in treble clef, key of A major (two sharps), and common time (C). The melody consists of six measures. Chord A is indicated above the staff.

*Reunion Jig*

Musical notation for "Reunion Jig" in treble clef, key of A major (two sharps), and 6/8 time. The melody consists of six measures. Chords A and E are indicated above the staff.

*Road to Lisdoonvarna*

Musical notation for "Road to Lisdoonvarna" in treble clef, key of A major (two sharps), and 6/8 time. The melody consists of six measures. Chord Em is indicated above the staff.

*Roger's Dodge*

Musical notation for "Roger's Dodge" in treble clef, key of A major (two sharps), and 2/2 time. The melody consists of six measures. Chord A is indicated above the staff.

*Rory O'More*

Musical notation for "Rory O'More" in treble clef, key of G major (one sharp), and 6/8 time. The melody consists of six measures. Chord G is indicated above the staff.

*Rose in the Heather*

Musical notation for "Rose in the Heather" in treble clef, key of A major (two sharps), and 6/8 time. The melody consists of six measures. Chords D and A are indicated above the staff.

*Saint Anne's Reel*

*Reel de Sainte Agathe*

Musical notation for "Saint Anne's Reel" in treble clef, key of A major (two sharps), and common time (C). The melody consists of six measures. Chord D is indicated above the staff.

Sandy Boys



Scarce O' Tatties



Seneca Square Dance (also see Waiting for the Federals)



Shenandoah Falls



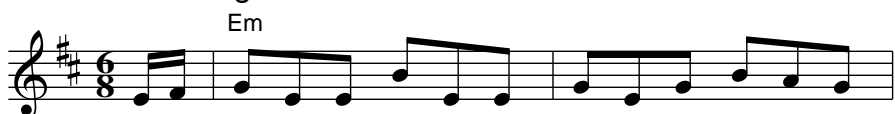
Spotted Pony



Squirrel Hunters



Swallows Tail Jig



Take a Dance



Tam Lin



Temperance Reel



Tourment, le (Jean-Paul Loyer © 1975)



*Tropiganda*

Musical notation for *Tropiganda*. The piece is in G major (one sharp) and common time (C). The melody consists of a sequence of eighth notes: G4, A4, B4, C5, B4, A4, G4, F#4, E4, D4. Chords G, C, and D are indicated above the staff.

*Waiting For Nancy*

Musical notation for *Waiting For Nancy*. The piece is in G major (one sharp) and common time (C). The melody consists of a sequence of eighth notes: G4, A4, B4, C5, B4, A4, G4, F#4, E4, D4. Chords D, D, and A are indicated above the staff.

*Waiting for the Federals (also see Seneca Square Dance)*

Musical notation for *Waiting for the Federals*. The piece is in G major (one sharp) and 2/2 time. The melody consists of a sequence of notes: G4 (quarter), A4 (quarter), B4 (quarter), C5 (quarter), B4 (quarter), A4 (quarter), G4 (quarter), F#4 (quarter), E4 (quarter), D4 (quarter). A chord G is indicated above the staff.

*Whiskey Before Breakfast*

Musical notation for *Whiskey Before Breakfast*. The piece is in G major (one sharp) and common time (C). The melody consists of a sequence of eighth notes: G4, A4, B4, C5, B4, A4, G4, F#4, E4, D4. A chord D is indicated above the staff.

*Wren, the*

Musical notation for *Wren, the*. The piece is in G major (one sharp) and common time (C). The melody consists of a sequence of notes: G4 (quarter), A4 (quarter), B4 (quarter), C5 (quarter), B4 (quarter), A4 (quarter), G4 (quarter), F#4 (quarter), E4 (quarter), D4 (quarter). Chords Bm and Em are indicated above the staff.